

# AGSGM150 Single or Dual Gas Monitor and Controller



## Key Features:

- **Easy Configuration:** NFC App, Menu, or BACnet
- **Dual Channel:** Single or dual gas monitoring
- **Replaceable Modules:** plug-and-play calibrated sensor modules
- **Calibration:** Non-intrusive & hands-free
- **IP 65 Option:** Splash guard accessories for improved IP rating
- **RS-485:** Modbus RTU or BACnet MS/TP (field selectable)
- **Analog Outputs:** 0-10V or 4-20mA output (field selectable)
- **Signal Relay:** 1A Relay Output
- **Control Relays:** 4X 8A Relay Terminals (2 DPDT Relays)
- **Power Flexibility:** 100-240 VAC & 24V AC/DC Power Inputs
- **Display screen** and RGB LED status indication
- **Manual Reset:** For buzzer and latched relays
- **Audible Buzzer:** Selectable >85dB
- **Listings:** Gas Performance UL2075
- **Plug-and-play:** Factory configured and calibrated
- **24V Output:** Can be used for strobes or low voltage controls

## Product Overview:

The GM150 is a single or dual gas detector designed for commercial safety and ventilation control applications. It supports BACnet MS/TP or Modbus RTU over RS485 for straightforward BAS integration and offers flexible analog and relay outputs for fan control, alarms, and interlocks. Field-replaceable smart sensors simplify maintenance, while the onboard LCD and status LEDs support setup and troubleshooting. With configurable alarms, delays, buzzer control, and override functions, the GM150 gives engineers and installers strong field flexibility.

## Part Codes

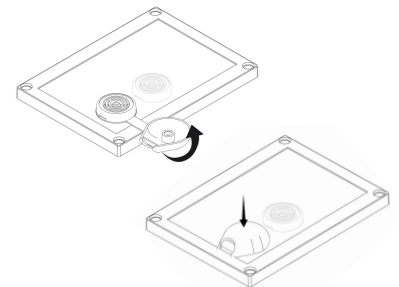
GM150 – [S1 Gas] [ Remote Option]– [S2 Gas][Remote Option]

**Gas Selection:** Select one (1) for each S1 and S2

Gas Type	Code
No Sensor	Leave Blank
Carbon Monoxide (CO)	CO
Nitrogen Dioxide (NO2)	NO2
Natural Gas (CH4)	CH4
Hydrogen (H2)	H2
Butane / Propane (LPG)	LPG
Oxygen (O2)	O2
Carbon Dioxide (CO2)	CO2



Remote Sensor



Splash Guard

**Remote Options:** Add "R" to end of Gas Code Example GM150-H2R

Configuration	Code	Explanation
Local Sensor	NO2	Gas sensor inside GM150 Enclosure
Remote Sensor	NO2R	Gas Sensor Installed Remotely

**Splash Guard Option:** Order GM-SPL

Option	Code
Splash Guard	GM-SPL

## Technical Specifications

### Mechanical

Material	ABS Flame Retardant UL94 V0
Height	8.2" (210mm)
Width	5.6" (142mm)
Depth	2" (53mm)
Weight	350g / 12.5 oz

### Electrical

Voltage	100~240VAC & 24V AC/DC
Power	20W Max full load
RS485 Network Capacity	127 Units

### IO

Digital Output x1	Modbus RTU or BACnet MS/TP (field selectable)
Signal Relay Output x1	1A, 60VDC
Analog Outputs x2	0/4-20mA or 0/2-10V (field selectable)
Relay 1 & 2	x2 DPDT 8A @ 230V (Terminal as x4 SPDT Relays)
24V Output x1	Permanent 24V Output (200mA)

### Environmental

Operating Temperature	-4° to 122°F (-20° to 50°C)
Humidity	15 to 90% RH (continuous) 0-99% (intermittent) non-condensing.
Atmospheric Pressure	6561ft (2000m)

### User Interface

LED Indications x2	Power, Alarm Low, Alarm High, Fault, Calibration
Audible Alarm x1	>85dB
Button(s) x3	Silence Alarm / Reset Unit / Manual Override
Configuration	Menu, NFC, BACnet MS/TP

### Certification/Conformance

Safety	UL/CSA/IEC/EN/BS 61010-1
Electromagnetic Compatibility	Directive 2014/30/EU / Regulation 2016 / EN 50270
FCC	This device complies with part 15 of the FCC Rules, Operation is subject to the following two conditions: (1) This device may not cause harmful interference, and (2) this device must accept any interference received, including interference that may cause undesired operation.
Gas Performance	UL 2075

### Default Alarm

Gas	AL1	AL1 Type	AL2	AL2 Type	Range
Carbon Monoxide (CO)	25ppm	Rising	100ppm	Rising	10 - 250ppm
Nitrogen Dioxide (NO2)	0.5ppm	Rising	2ppm	Rising	0.5 - 10ppm
Natural Gas (CH4)	8% LEL	Rising	10% LEL	Rising	0 - 90% LEL
Hydrogen (H2)	8% LEL	Rising	10% LEL	Rising	0 - 90% LEL
Butane / Propane (LPG)	8% LEL	Rising	10% LEL	Rising	0 - 90% LEL
Oxygen (O2)	19.5% v/v	Falling	18.5% / 23% v/v	Falling/Rising	0 - 25% v/v
Carbon Dioxide (CO2)	0.5% v/v (5,000ppm)	Rising	3% v/v (30,000ppm)	Rising	0 - 5% v/v

