

AGSGSV6

Datasheet

6" Flanged Gas Solenoid Valve
 2-Way, Internally Piloted, Normally
 Closed, 0-50PSI / 120VAC



120VAC Power
Input



Complies with UL 429



Normally
Closed Safety
Shutoff With
Assisted Lift



0-50PSI"
Pressure Rating

Other Pressures
Also Available

Standards



Product Overview

The AGS range of normally closed, electrically operated gas valves provide safety shut down over combustible gas such as natural (Methane) and LP (Liquefied petroleum). The valve range is equipped with a cast-iron body, NEMA 4 coil, and NBR diaphragm. A visual position indicator is incorporated as well.

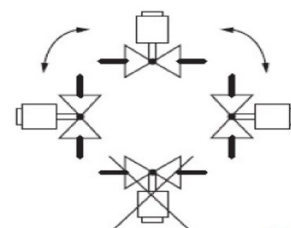
These valves are suitable for CSD-1 applications along with on/off control on water heaters, atmospheric boilers, roof top make up air units, power burners and commercial kitchen ranges. Add manual re-set by implementing an AGS controller or panic button.

Technical Specification

Pipe Size (Inch)	Cv Flow Factor	Gas Capacity	Operating Pressure	Max. Fluid Temp
6" (Flanged)	1172	63,800 Cu.Ft/hr	0-50PSI	150 °F
*capacity calculated @ 1" wc pressure drop with SG of 0.64. Greater capacity increase pressure drop across the valve.				
Opening Time	Closing Time	Enclosure	Ambient Temperature	Pipe Taps
12 seconds max.	1 second max.	Type NEMA 4	-20°F to 125°F	1/4"

Power Requirement	Standard Voltage
324 VA	120VAC / 60Hz

Mounting Position



Multi-Pose, may be mounted in any position.

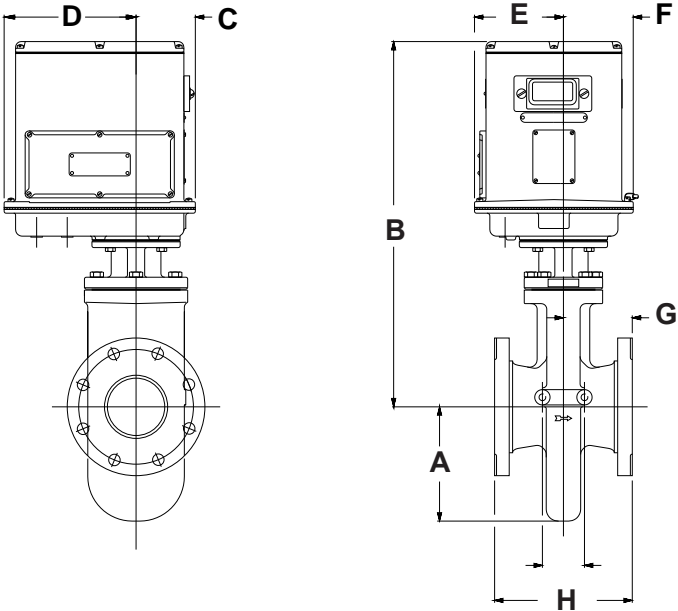


WARNING

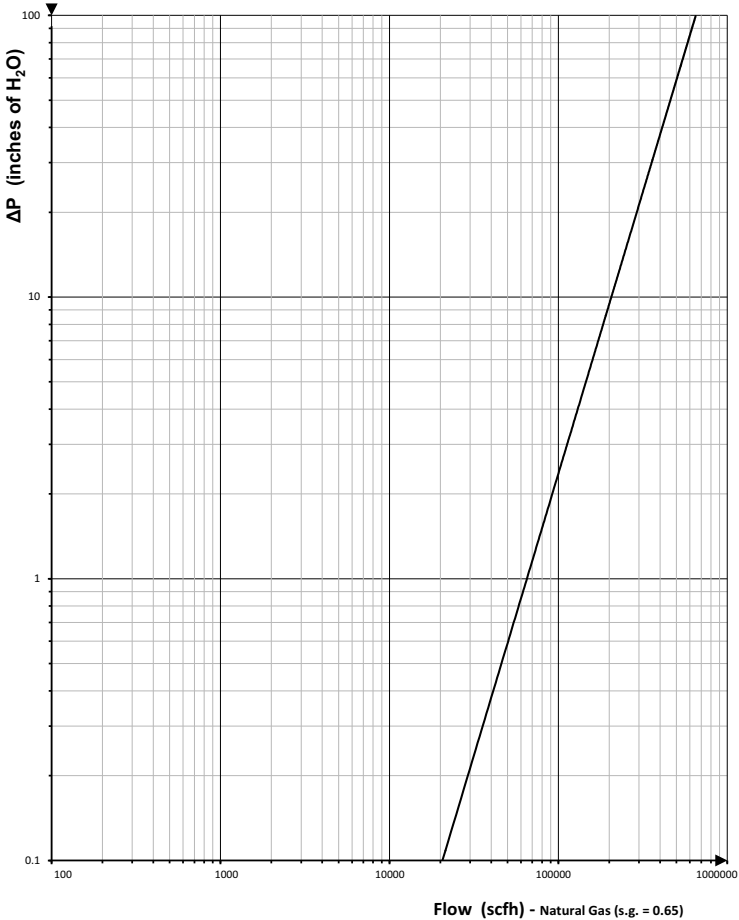
If the flow is not in the same direction of arrow, valve may not shut off.

Dimensions:

A	B	C	D	E	F	G	H
8.38"	25.0"	3.87"	8.63"	5.81"	4.56"	5.25"	10.5"



Capacity:



Find out more
American Gas Safety LLC
www.americangassafety.com
 Head office:
 6304 Benjamin Road, Suite 502, Tampa, FL 33634
 Tel: (727) 608-4375
 Email: info@americangassafety.com

