

# AGSGSV6

## Datasheet

6" Flanged Gas Solenoid Valve  
 2-Way, Internally Piloted, Normally  
 Closed, 0-20PSI / 120VAC



120VAC Power  
Input



Complies with UL 429



Normally  
Closed Safety  
Shutoff With  
Assisted Lift



0-20PSI"  
Pressure Rating

Other Pressures  
Also Available

### Standards



### Product Overview

The AGS range of normally closed, electrically operated gas valves provide safety shut down over combustible gas such as natural (Methane) and LP (Liquefied petroleum). The valve range is equipped with a cast-iron body, NEMA 4 coil, and NBR diaphragm. A visual position indicator is incorporated as well.

These valves are suitable for CSD-1 applications along with on/off control on water heaters, atmospheric boilers, roof top make up air units, power burners and commercial kitchen ranges. Add manual re-set by implementing an AGS controller or panic button.

### Technical Specification

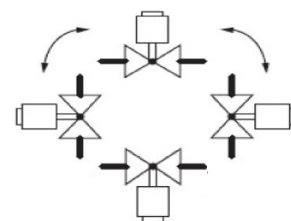
Pipe Size (Inch)	Cv Flow Factor	Gas Capacity	Operating Pressure	Max. Fluid Temp
6" (Flanged)	1020	50,000 Cu.Ft/hr	0-20PSI	150 °F

\*capacity calculated @ 1" wc pressure drop with SG of 0.64. Greater capacity increase pressure drop across the valve.

Opening Time	Closing Time	Enclosure	Ambient Temperature	Pipe Taps
27 seconds max.	1 second max.	Type 4	-40°F to 150°F	1/4"

Power Requirement	Standard Voltage
324 VA	120VAC / 60Hz

### Mounting Position



**Multi-Pose**, may be mounted in any position.

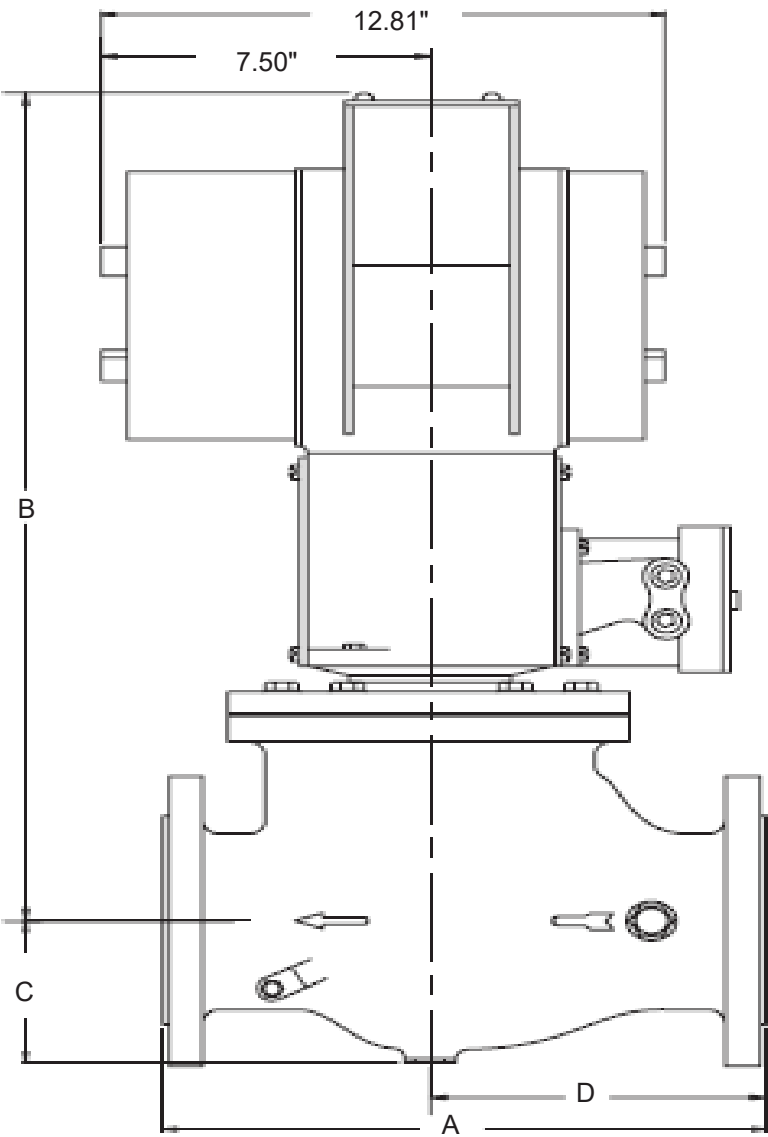


#### WARNING

If the flow is not in the same direction of arrow, valve may not shut off.

Dimensions:

A	B	C	D
17.81"	29.75"	5.13"	10.35"



Find out more  
**American Gas Safety LLC**  
[www.americangassafety.com](http://www.americangassafety.com)

Head office:  
6304 Benjamin Road, Suite 502, Tampa, FL 33634

Tel: (727) 608-4375  
Email: [info@americangassafety.com](mailto:info@americangassafety.com)

