

AGSRTFT Datasheet

Refrigerant Gas Detector
 134a, 407c, 410a, 417a & 32



24VAC or DC
 Power Input



Standalone
 Detector or
 Used with an
 AGS Controller



Traffic Light
 Indicator Display
 Changes Color
 Dependent On Gas
 Levels



MODBUS
 Communications



Modern & Compact
 Design



Alarm Relay
 Dry Contact



Plug & Play
 Installation

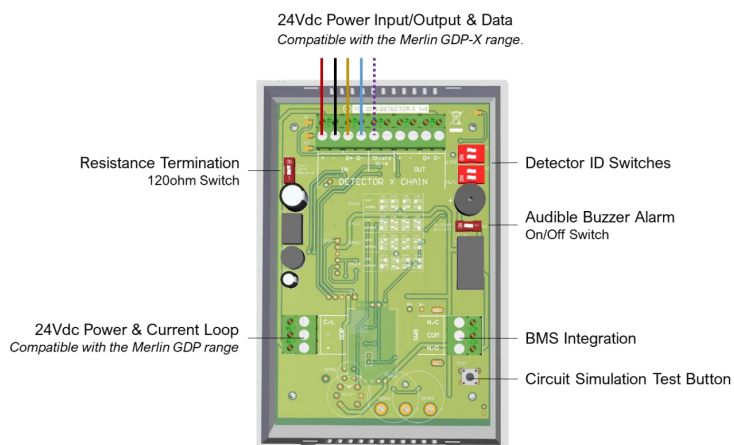
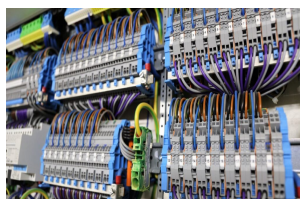


In-Built
 Audible Alarm

Product Overview

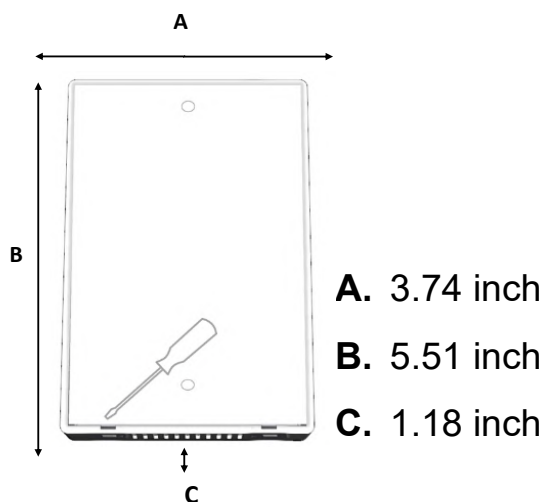
The TFT range of AGS detectors work in combination with the AGS Merlin range of Gas Detection panels and Utility Controllers. The AGSRTFT features a semiconductor sensor for industrial and commercial indoor applications. Compact, modern, digital design makes the units aesthetically pleasing and easy to install.

Popular Applications



Technical Specification

General							
Model:		Merlin Gas Detector TFT					
Target Gases:		Refrigerant 134a, 407c, 410a, 417a & 32					
Size: (H x W x D)		5.51 x 3.74 x 1.18" (140 x 95 x 30mm)					
Housing Material:		ABS Polyac - PA765					
Mounting:		Safe Zone - Indoor use - Wall Mounted					
Weight:		Max. 1.77oz (0.05kg)					
User Interface							
Display:		1.8" TFT					
Screen Brightness:		Non-Adjustable					
Visual Indicators:		TFT visual. Green: Normal; Yellow: Pre-Alarm; Red: Alarm					
Audible Alarm:		>70dB @ 3.28ft (1m). Quiet conditions.					
Buttons:		None					
Language:		English					
Power Supply							
Power Consumption:		90mA Max @ 24vdc					
DC Power:		12-32 VDC - Nominal 24 VDC					
Internal Fuse:		None					
Equipment							
Overvoltage Category:		III					
Pollution Degree:		3					
I/O							
Relay:		Volt Free (Normally Closed / Common / Normally Open) 1x 30vdc 2A (Non-Latching)					
Environmental							
Ingress Protection:		Not Formally Evaluated					
Operating:		-10 ~ 50°C / 14 ~ 122°F 30 ~ 80% RH (non-condensing)					
Storage:		-25 ~ 50°C / -13~122F° up to 95% RH (non-condensing)					
Altitude Rating:		2000m					
Wiring							
Typical		#15AWG Power Pair; #18AWG Data Pair-Tinned copper.					
Approvals							
Electromagnetic Compatibility and Electrical Safety		BS/IEC/EN 61010-1 EMC EN 50270					
Other							
Communication		RS485 MODBUS RTU					
Gas Sensor	Indicating Range	Steps	Response (t90)	Recovery (t10)	Alarm: 1 (Pre alarm warning)	Alarm: 2	*EOL (Years)
R134a, R407c, R410a, R417a & R32	100-5000ppm	1	<60s	<60s	▲ 500ppm ▼ 800ppm	▲ 1000ppm	10



Area of coverage

Consider the coverage required and function of the area. Emphasis should be placed on airflow patterns and correct placement, not perceived detecting ranges. The target gas will only be identified when contact is made with the sensing element itself.

The AGSRTFT monitor should be installed approximately 1ft from the ground level.

Find out more

American Gas Safety LLC

www.americangassafety.com

Head office:

6304 Benjamin Road, Suite 502, Tampa, FL 33634

Tel: (727) 608-4375

Email: info@americangassafety.com

