

# AGSCOPS Datasheet

## Carbon Monoxide ParkSafe Detector



24VDC Power Input



Used With The  
 ParkSafe Controller



Traffic Light  
 Indicator Display  
 Changes Color  
 Dependent On Gas  
 Levels



BMS  
 Communications



Modern & Compact  
 Design



Up To 16 Detectors  
 Can Be Linked Together



Plug & Play  
 Installation

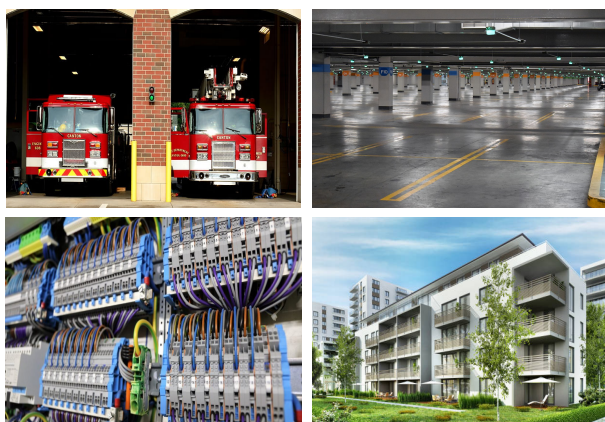


End of Operational Life  
 & Annual Service  
 Notifications to  
 ParkSafe Controller

## Product Overview

The AGS PS range of detectors work in combination with the AGS ParkSafe, a Gas Detection & Ventilation Controller specifically designed for Parking Garage CO & NO<sub>2</sub> monitoring. The AGSCO2PS features a electrochemical sensor for industrial and commercial indoor applications. Compact, modern, digital design makes the units aesthetically pleasing and easy to install.

## Popular Applications



### Detector Chain Terminals

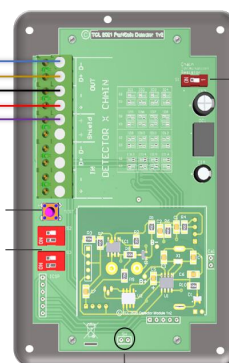
Power & Data Connections  
 Wire Size: 14-18AWG

Modbus Data  
 24vdc Power  
 Shield

**Chain Termination Resistor**  
 Used to select the first and last  
 device in the chain

Circuit Simulation Test Button

ID Switch Configuration



Service Message Reset Header

## Technical Specification

General							
Model:		ParkSafe Detector					
Gases:		Carbon Monoxide					
Size: (H x W x D)		4.92 x 3.15 x 1.38"					
Housing Material:		ABS					
Mounting:		Wall Mounting – No limits - Non-Hazardous Areas					
Weight:		1.6oz					
User Interface							
Display:		LED					
Visual Indicators:		Power / Alarm / Fault					
Audible Alarm:		None					
Power Supply							
Power Consumption:		15mA Max @ 24Vdc					
DC Power:		12-32Vdc (24vdc Nominal)					
Internal Fuse:		N/A					
Equipment							
Pollution Degree:		2					
Equipment Class:		2					
Environmental							
Ingress Protection:		Not Formally Evaluated					
Operating:		-10 ~ 50°C / 14 ~ 122°F 30 ~ 80% RH (non-condensing)					
Storage:		-25 ~ 50°C / -13~122F° up to 95% RH (non-condensing)					
Altitude Rating:		2000m					
Wiring							
Typical		Copper 18AWG (0.75mm2) Min. 8x screw terminals.					
Other							
Communication		RS485 MODBUS RTU					
Sensor Specification							
Factory Calibration Conditions		25° ± 5°C - 77° ± 41°F (40-70% RH)					
Sensor Type		Electromechanical					
Gas Sensor	Measuring Range (ppm)	Calibration Gas	Response (T90)	Recovery (T10)	Alarm: 1 (Pre alarm warning)	Alarm: 2	*EOL (Years)
Carbon Monoxide (CO)	0-1000ppm	120ppm CO	<60s	<50s	▲ 25ppm	▲ 100ppm	5



### Area of coverage

Consider the coverage required and function of the area. Emphasis should be placed on airflow patterns and correct placement, not perceived detecting ranges.

The AGSCOPS monitor should be installed approximately 4-5ft from the ground level.

Find out more

**American Gas Safety LLC**

[www.americangassafety.com](http://www.americangassafety.com)

Head office:

6304 Benjamin Road, Suite 502, Tampa, FL 33634

Tel: (727) 608-4375

Email: [info@americangassafety.com](mailto:info@americangassafety.com)

