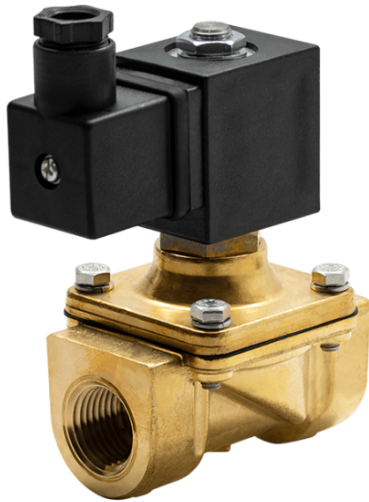


SOLVLV-Y-DC

Datasheet

2-Way, Internally Piloted
 Normally Closed,
 12VDC, 1/2" - 1 1/2" NPT



12VDC Power Input



UL Listed



Normally Closed Safety Shutoff



1/2" to 1 1/2" NPT Available For This Model
 Various Other Sizes Also Available

Standards



Product Overview

AGS SOLVLV-Y-DC solenoid valves are normally closed (N/C) and constructed with a durable brass body, two-way inlet and outlet ports. This series of solenoid valves have been designed to control air, inert gas & water. Examples include: Compressed Air, Oxygen, Nitrogen, Vacuum, Propane & Methane.

Sizes Available

Valve Size " (inch) NPT	AGS Part Number
1/2"	SOLVLV-Y-12-DC
3/4"	SOLVLV-Y-34-DC
1"	SOLVLV-Y-1-DC
1+1/4"	SOLVLV-Y-114-DC
1+1/2"	SOLVLV-Y-112-DC

Materials of Construction

Body / Orifice	Brass
Core Tube	Stainless Steel 300
Fixed Core	Stainless Steel 400
Plunger	Stainless Steel 400
Spring	Stainless Steel 300
Shading Ring	Copper

Electrical Specifications

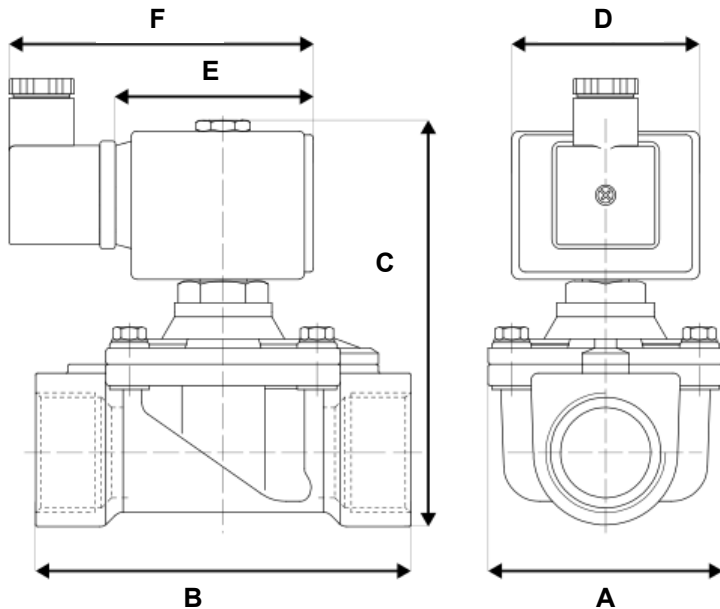
	SOLVLV-Y-12-DC	SOLVLV-Y-34-DC	SOLVLV-Y-1-DC	SOLVLV-Y-114-DC	SOLVLV-Y-112-DC
Power:	12VDC	12VDC	12VDC	12VDC	12VDC
Wattage:	8W	8W	8W	8W	8W
Consumption:	0.67A	0.67A	0.67A	0.67A	0.67A
Voltage Tolerance:	+10% - 5%	+10% - 5%	+10% - 5%	+10% - 5%	+10% - 5%
Coil Inner Diameter:	1/2"	1/2"	1/2"	1/2"	1/2"
Coil Molding:	Polyamide (PA)	Polyamide (PA)	Polyamide (PA)	Polyamide (PA)	Polyamide (PA)
Coil Rating:	15-310°F (Class F)	15-310°F (Class F)	15-310°F (Class F)	15-310°F (Class F)	15-310°F (Class F)
Duty Cycle:	Continuous, 100 ED	Continuous, 100 ED	Continuous, 100 ED	Continuous, 100 ED	Continuous, 100 ED
Enclosures:	NEMA 4, IP65	NEMA 4, IP65	NEMA 4, IP65	NEMA 4, IP65	NEMA 4, IP65

Technical Specifications

	SOLVLV-Y-12-DC	SOLVLV-Y-34	SOLVLV-Y-1-DC	SOLVLV-Y-114-DC	SOLVLV-Y-112-DC
Pipe Size (Inch)	1/2"	3/4"	1"	1 1/4"	1 1/2"
Orifice Size (Inch)	1/2"	3/4"	1"	1 3/8"	1 5/8"
Flow Factor (CV)	4.90	9.80	13.00	28.00	36.00
Voltage (AC)	12VDC	12VDC	12VDC	12VDC	12VDC
Wattage (W)	8 Watts	8	8 Watts	8 Watts	8 Watts
Pressure (PSI)	3-230 psi	3-230 psi	3-230 psi	2-150 psi	2-150 psi
Sealing Material	NBR	NBR	NBR	NBR	NBR
Temperature Range	15-195°F	15-195°F	15-195°F	15-195°F	15-195°F
Connector Supplied	Cable Grip DIN	Cable Grip DIN	Cable Grip DIN	Cable Grip DIN	Cable Grip DIN
Medium Examples	Inert Gas, Air, Water	Inert Gas, Air, Water	Inert Gas, Air, Water	Inert Gas, Air, Water	Inert Gas, Air, Water

Valve Dimensions

	SOLVLV-Y-12-DC	SOLVLV-Y-34-DC	SOLVLV-Y-1-DC	SOLVLV-Y-114-DC	SOLVLV-Y-112-DC
Valve Width (A):	1 5/8"	2 1/2"	2 1/2"	3 7/8"	3 7/8"
Valve Length (B):	2 5/8"	4 1/8"	4 1/8"	5 5/8"	5 5/8"
Valve Height (C):	3 7/8"	4 1/8"	4 3/8"	5 1/8"	5 1/8"
Coil Width (D):	1 1/8"	1 1/8"	1 1/8"	1 1/8"	1 1/8"
Coil Length (E):	1 5/8"	1 5/8"	1 5/8"	1 5/8"	1 5/8"
Coil Height (F):	2 3/4"	2 3/4"	2 3/4"	2 3/4"	2 3/4"



Note: The valve pictured above is with a simple coil, which may or may not reflect the exact specifications of the this particular build.

Find out more

American Gas Safety LLC

www.americangassafety.com

Head office:

6304 Benjamin Road, Suite 502, Tampa, FL 33634

Tel: (727) 608-4375

Email: info@americangassafety.com

