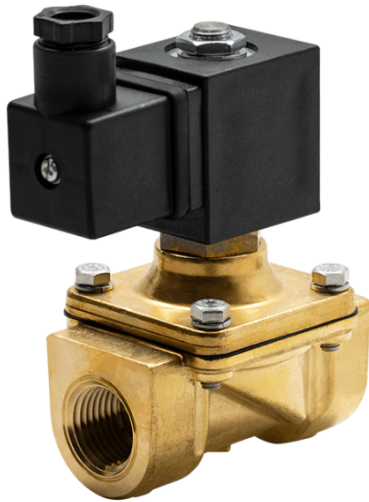


# SOLVLV-V-DC

## Datasheet

2-Way, Internally Piloted  
 Normally Closed, 12VDC  
 1/2" - 1 1/2" NPT



12VDC Power Input



UL Listed



Normally Closed Safety Shutoff



1/2" to 1 1/2" NPT Available For This Model  
 Various Other Sizes Also Available

### Standards



## Product Overview

AGS SOLVLV-V solenoid valves are normally closed (N/C) and constructed with a durable brass body, two-way inlet and outlet ports. This series of solenoid valves have been designed to control mineral oils, deionized water & chemicals. Examples include: Carbon Dioxide (CO<sub>2</sub>), Helium, Argon & Acetylene.

## Sizes Available

Valve Size " (inch) NPT	AGS Part Number
1/2"	SOLVLV-V-12-DC
3/4"	SOLVLV-V-34-DC
1"	SOLVLV-V-1-DC
1+1/4"	SOLVLV-V-114-DC
1+1/2"	SOLVLV-V-112-DC

## Materials of Construction

Body / Orifice	Brass
Core Tube	Stainless Steel 300
Fixed Core	Stainless Steel 400
Plunger	Stainless Steel 400
Spring	Stainless Steel 300
Shading Ring	Copper

## Electrical Specifications

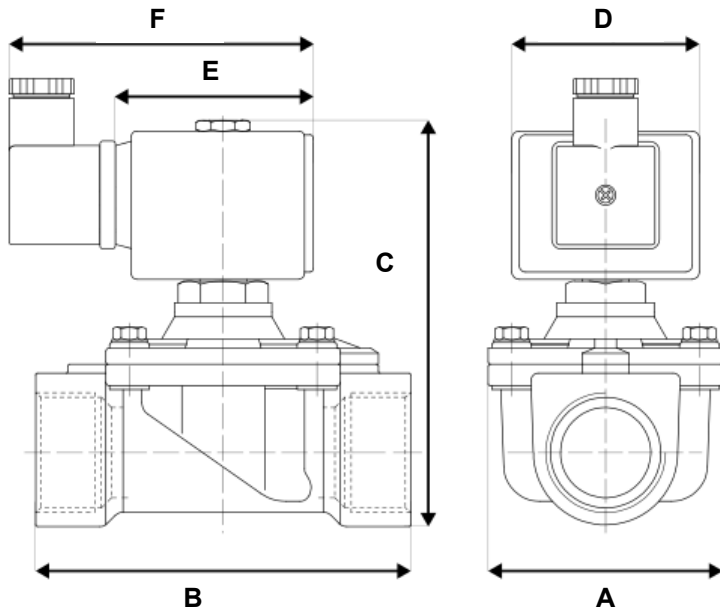
	SOLVLV-V-12-DC	SOLVLV-V-34-DC	SOLVLV-V-1-DC	SOLVLV-V-114-DC	SOLVLV-V-112-DC
Power:	12VDC	12VDC	12VDC	12VDC	12VDC
Wattage:	8W	8W	8W	8W	8W
Consumption:	0.67A	0.67A	0.67A	0.67A	0.67A
Voltage Tolerance:	+10% - 5%	+10% - 5%	+10% - 5%	+10% - 5%	+10% - 5%
Coil Inner Diameter:	1/2"	1/2"	1/2"	1/2"	1/2"
Coil Molding:	Polyamide (PA)	Polyamide (PA)	Polyamide (PA)	Polyamide (PA)	Polyamide (PA)
Coil Rating:	-5-310°F (Class H)	-5-310°F (Class H)	-5-310°F (Class H)	-5-310°F (Class H)	-5-310°F (Class H)
Duty Cycle:	Continuous, 100 ED	Continuous, 100 ED	Continuous, 100 ED	Continuous, 100 ED	Continuous, 100 ED
Enclosures:	NEMA 4, IP65	NEMA 4, IP65	NEMA 4, IP65	NEMA 4, IP65	NEMA 4, IP65

## Technical Specifications

	SOLVLV-V-12-DC	SOLVLV-V-34-DC	SOLVLV-V-1-DC	SOLVLV-V-114-DC	SOLVLV-V-112-DC
Pipe Size (Inch)	1/2"	3/4"	1"	1 1/4"	1 1/2"
Orifice Size (Inch)	5/8"	5/8"	1"	1 3/8"	1 5/16"
Flow Factor (CV)	2.80	2.80	8.40	19.00	19.00
Voltage (AC)	12VDC	12VDC	12VDC	12VDC	12VDC
Wattage (W)	8 Watts	8 Watts	8 Watts	8 Watts	8 Watts
Pressure (PSI)	3-150 psi	3-150 psi	3-230 psi	3-230 psi	3-230 psi
Sealing Material	FKM	FKM	FKM	FKM	FKM
Temperature Range	15-280°F	15-280°F	15-280°F	15-280°F	15-280°F
Connector Supplied	Cable Grip DIN	Cable Grip DIN Mineral	Cable Grip DIN Mineral	Cable Grip DIN	Cable Grip DIN
Medium Examples	Air, Inert Gas, Oils/Water	Air, Inert Gas, Oils/Water	Air, Inert Gas, Oils/Water	Air, Inert Gas, Oils/Water	Air, Inert Gas, Oils/Water

## Valve Dimensions

	SOLVLV-V-12-DC	SOLVLV-V-34-DC	SOLVLV-V-1-DC	SOLVLV-V-114-DC	SOLVLV-V-112-DC
Valve Width (A):	1 5/8"	2 1/2"	2 1/2"	3 7/8"	3 7/8"
Valve Length (B):	2 5/8"	4 1/8"	4 1/8"	5 5/8"	5 5/8"
Valve Height (C):	3 7/8"	4 1/8"	4 3/8"	5 1/8"	5 1/8"
Coil Width (D):	1 1/8"	1 1/8"	1 1/8"	1 1/8"	1 1/8"
Coil Length (E):	1 5/8"	1 5/8"	1 5/8"	1 5/8"	1 5/8"
Coil Height (F):	2 3/4"	2 3/4"	2 3/4"	2 3/4"	2 3/4"



Note: The valve pictured above is with a simple coil, which may or may not reflect the exact specifications of the this particular build.

Find out more

**American Gas Safety LLC**

[www.americangassafety.com](http://www.americangassafety.com)

Head office:

6304 Benjamin Road, Suite 502, Tampa, FL 33634

Tel: (727) 608-4375

Email: [info@americangassafety.com](mailto:info@americangassafety.com)

