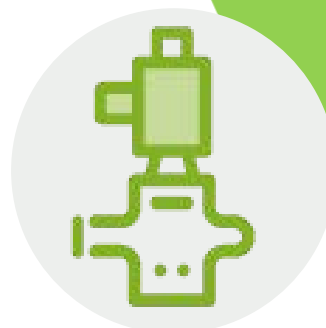


AGSMerlin4INF30PSI

Datasheet

4" Flanged Gas Solenoid Valve
 2-Way, Electrohydraulic Actuator,
 Normally Closed, Safety Shut Off,
 0-30PSI / 120VAC



120VAC Power Input



UL Listed



Normally Closed Safety Shutoff



Various Other Sizes Also Available

Standards



Product Overview

The AGS range of normally closed, electrically operated gas valves provide safety shut down over combustible gas such as natural (Methane) and LP (Liquefied petroleum).

These valves are suitable for CSD-1 applications along with on/off control on water heaters, atmospheric boilers, roof top make up air units, power burners and commercial kitchen ranges.

Add manual re-set by incorporating an AGS control or panic button.

Technical Specification

Pipe Size	*Max Operating Pressure Differential	**Max. Rated Pressure
4" Flanged	30 PSI	150PSI

*Max Operating Pressure Differential (UL) allowable pressure drop from inlet to output for proper operation.

**Max. Rated Pressure that the valve can be exposed to without leakage or damage to the valve.

Cf/h	Cv Flow Factor
27,000	510

Voltage	Inrush	Opening	Holding	VA
120VAC / 60Hz	27	2.7	0.18	324

Nominal Opening Time	Closing Time
27 Seconds Maximum	One Second Maximum

Approvals

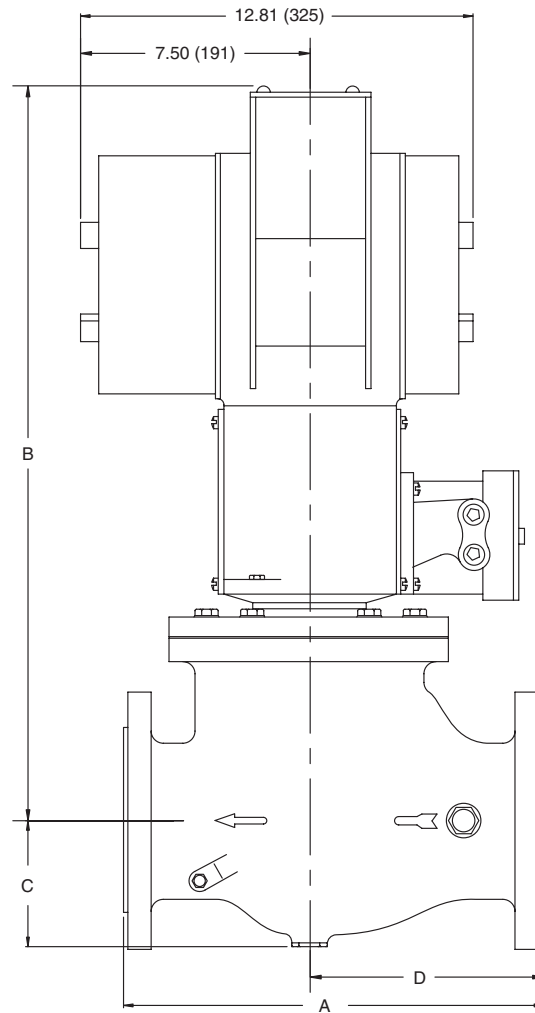
UL YLOZ Automatic Shut Off Valves
 Complies with:
 AGA
 CSA/ANSI Z21.21-CGA6.5 FM
 CSD-1 Acceptable

Optional Extras

- Closed Position Indicator
- Type 4 Watertight Enclosure Available For Outdoor or Indoor Wash Down Installations (Type 1 General Purpose Enclosure Standard)
- Visual Power Indicator

Dimensions:

A	13.87 Inch
B	28.69 Inch
C	4.06 Inch
D	7.75 Inch



Features:

Ambient temperature rating is -40°F to +150°F (-40°C to +66°C) Valve and actuator combinations can be mounted in any position.

Factory installed single pole double throw (SPDT) field adjustable Auxiliary Switch.

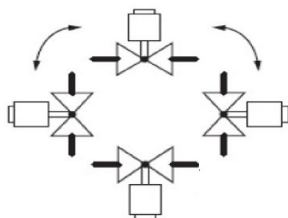
Standard enclosure meets NEMA1 (IP30) requirements; models available with NEMA4 (IP54) weatherproof enclosure.

Valve seal overtravel interlock (double seal) to meet specific code, standard and insurer requirements.

Red OPEN indicator attached to actuator stem with Yellow SHUT indicator shows fully CLOSED.

Aux. Switch and Proof-of-Closure Switch Ratings. (1/4 hp @ 120V).

Mounting Position



Multi-Pose, may be mounted in any position.

WARNING

If the flow is not in the same direction of arrow, valve may not shut off.

Find out more

American Gas Safety LLC

www.americangassafety.com

Head office:

6304 Benjamin Road, Suite 502, Tampa, FL 33634

Tel: (727) 608-4375

Email: info@americangassafety.com

