

AGSGSV6

Datasheet

6" Flanged Gas Solenoid Valve
 2-Way, Internally Piloted, Normally
 Closed, 0-20PSI / 120VAC



120VAC Power
Input



UL Listed



Normally
Closed Safety
Shutoff With
Assisted Lift



0-20PSI"
Pressure Rating

Other Pressures
Also Available

Standards



Product Overview

The AGS range of normally closed, electrically operated gas valves provide safety shut down over combustible gas such as natural (Methane) and LP (Liquefied petroleum).

These valves are suitable for CSD-1 applications along with on/off control on water heaters, atmospheric boilers, roof top make up air units, power burners and commercial kitchen ranges.

Add manual re-set by incorporating an AGS controller or panic button.

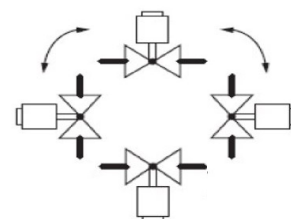
Technical Specification

Pipe Size (Inch)	Cv Flow Factor	Gas Capacity	Operating Pressure	Max. Fluid Temp
6" (Flanged)	1020	50,000 Cu.Ft/hr	0-20PSI	150 °F

Opening Time	Closing Time	Enclosure	Ambient Temperature	Pipe Taps
27 seconds max.	1 second max.	Type 4	-40°F to 150°F	1/4"

Power Requirement	Standard Voltage
324 VA	120VAC / 60Hz

Mounting Position



Multi-Pose, may be mounted in any position.

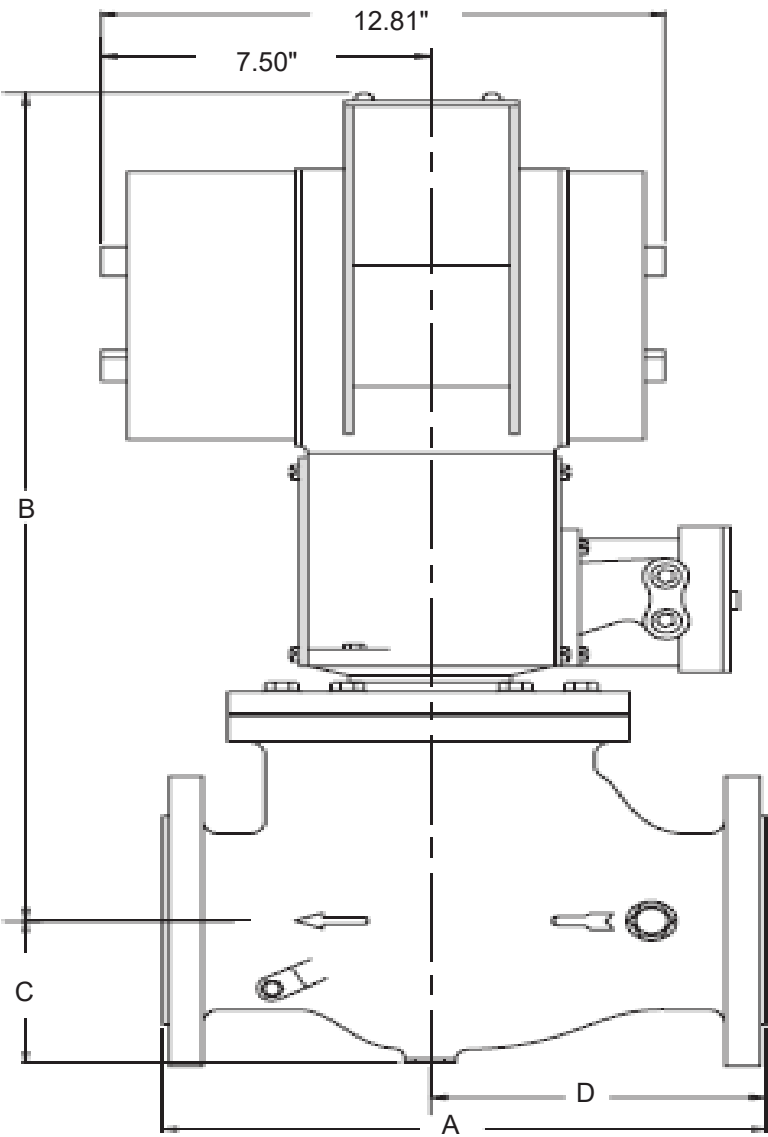


WARNING

If the flow is not in the same direction of arrow, valve may not shut off.

Dimensions:

A	B	C	D
17.81"	29.75"	5.13"	10.35"



Find out more
American Gas Safety LLC
www.americangassafety.com

Head office:
6304 Benjamin Road, Suite 502, Tampa, FL 33634

Tel: (727) 608-4375
Email: info@americangassafety.com

