



AGS
AMERICAN GAS SAFETY

AGS CH4CO Mini Merlin

Combined Natural Gas &
Carbon Monoxide Monitor

Partcode: AGSCH4CO

Protect Life & Building



Automatic Emergency Shutdown

Boiler and/or gas supply shutdown in alarm i.e. gas detected, emergency panic & fire alarm activation



Manual Reset

Touch button for manual reset after an alarm state or upon start-up



Plug & Play

Pre-programmed inputs & outputs for fast and easy installation



Meets Code Requirements

Carbon monoxide interlock code in Texas, Florida & Georgia



Modern Design

Slim robust enclosure with touch sensitive button



BMS & Fire Panel Connectivity

Outputs available to BMS systems via the controllers dry contacts



UL Listed

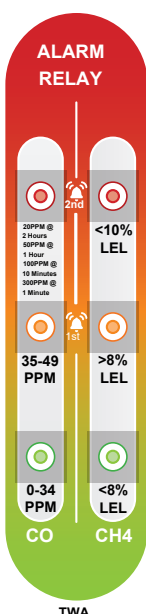
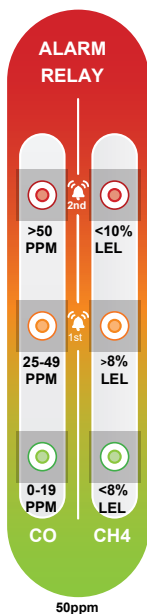
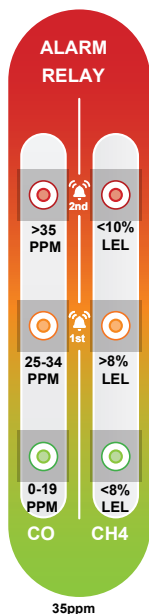
UL 61010 Listed Controller
UL 2075 sensor



Easy To Use

Clear TFT screen displays status indications & live gas detector values

Alarm Level Thresholds



ALARM

Continuous Visual & Audible Alarm.
Automatic Shutdown of Connected Gas Solenoid Valve and/or Boiler(s)

PRE ALARM

Sounder Alarm Every 15 Seconds

GOOD

Gas Concentration at a Safe Level

**COMPACT,
ROBUST &
AFFORDABLE**

No Programming Required



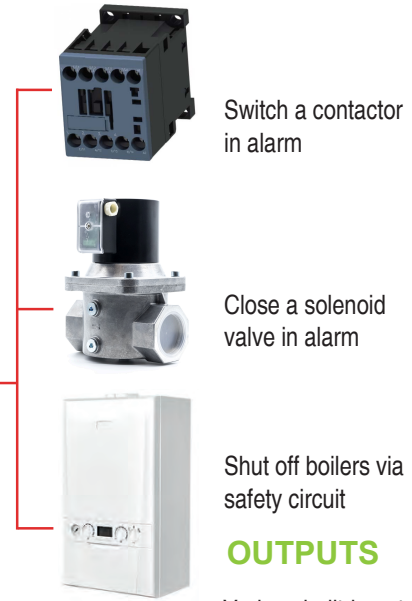
INPUTS

Inputs from various devices will initiate an alarm condition, which will shut down connected devices



THE MINI MERLIN

Protecting you and your environment from the dangers of explosive gas and poisonous carbon monoxide



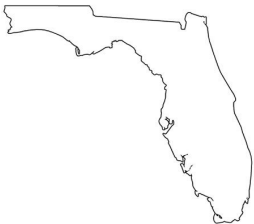
OUTPUTS

Various built-in outputs allow the Mini Merlin to shut down devices

Carbon Monoxide Interlock Codes

In Texas, Florida & Georgia, a carbon monoxide detector is required with all new & refurbished boiler(s) installations to automatically shutdown the boiler(s) in the event of high CO levels. See below a summary of the existing codes.

For more information on the specific code requirements, please refer to our website <https://americangassafety.com/mini-merlin-range/>



Florida Statutes 2022 Compliant

- ✓ Meets the 2022 Florida Statutes - Chapter 509.211 Safety Regulations
- ✓ Required in every public enclosed space or room that contains a boiler over 200,000 BTU's, regulated under chapter 554.
- ✓ CO detector must prevent boiler from operation if the levels exceed 35ppm, and must have a manual reset.
- ✓ Emergency boiler panic button required per exit, located outside the room or just inside the door if is an external door.



Texas (TDLR) Compliant

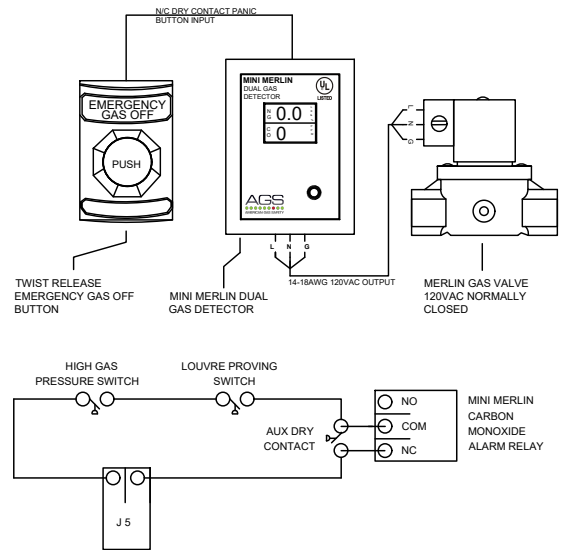
- ✓ Meets the TDLR Code - Section 65.206 Boiler Room
- ✓ Required in every boiler room with new or re-installations of one of more boilers, completed after September 1, 2020.
- ✓ CO detector must prevent boiler from operation if the levels exceed 50ppm, and must have a manual reset.
- ✓ The carbon monoxide detector shall disable the burners upon loss of power to the detector.



Georgia 2022 Rules Compliant

- ✓ Meets the 2022 Rules & Regulations of the State of Georgia - Rule 120-3-26-.07
- ✓ Required in every boiler room containing one or more boiler/heater/ pressure vessel which CO can be produced.
- ✓ CO detector must alarm at 50ppm and prevent boiler from operation if the levels exceed 200ppm.
- ✓ The carbon monoxide detector shall disable the burners upon loss of power to the detector.

Plug and Play Installation



Find out more

American Gas Safety LLC

www.americangassafety.com

Head office: 6304 Benjamin Road, Suite 502, Tampa, FL 33634

Tel: (727) 608-4375

Email: info@americangassafety.com



**SIMPLE,
EFFICIENT &
RELIABLE**