

AGSCOTFT Datasheet

Carbon Monoxide Detector



24VDC Power Input



Detector should be used with an AGS Controller



Traffic Light Indicator Display Changes Color Dependent On Gas Levels



BMS & MODBUS Communications



Modern & Compact Design



Alarm Relay Dry Contact



Plug & Play Installation

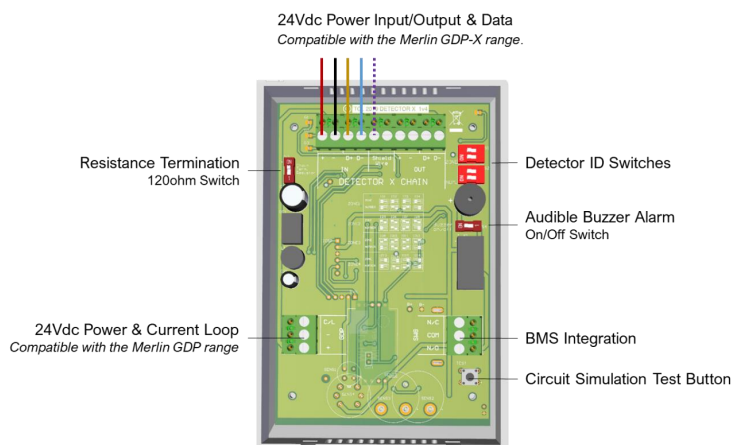
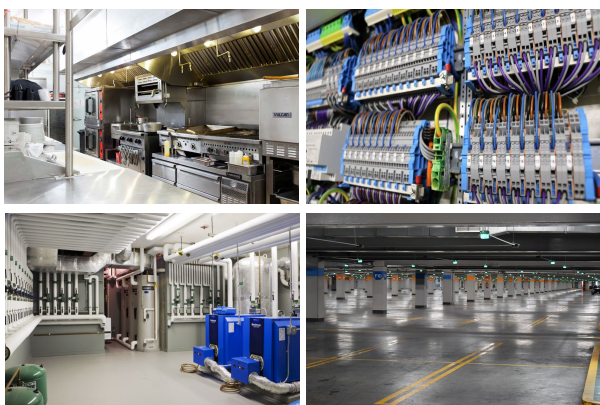


In-Built Audible Alarm

Product Overview

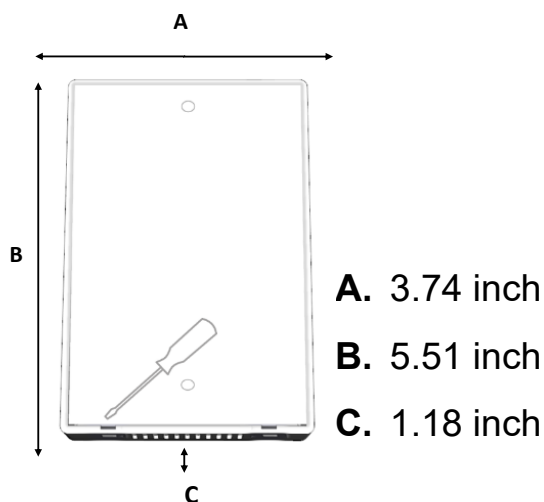
The TFT range of AGS detectors work in combination with the AGS Merlin range of Gas Detection panels and Utility Controllers. The AGSCOTFT features an electrochemical sensor for industrial and commercial indoor applications. Compact, modern, digital design makes the units aesthetically pleasing and easy to install.

Popular Applications



Technical Specification

General							
Model:		Merlin Gas Detector TFT					
Target Gases:		CO					
Size: (H x W x D)		5.51 x 3.74 x 1.18" (140 x 95 x 30mm)					
Housing Material:		ABS Polyac - PA765					
Mounting:		Safe Zone - Indoor use - Wall Mounted					
Weight:		Max. 1.77oz (0.05kg)					
User Interface							
Display:		1.8" TFT					
Screen Brightness:		Non-Adjustable					
Visual Indicators:		TFT visual. Green: Normal; Yellow: Pre-Alarm; Red: Alarm					
Audible Alarm:		>70dB @ 3.28ft (1m). Quiet conditions.					
Buttons:		None					
Language:		English					
Power Supply							
Power Consumption:		90mA Max @ 24vdc					
DC Power:		12-32 VDC - Nominal 24 VDC					
Internal Fuse:		None					
Equipment							
Overvoltage Category:		III					
Pollution Degree:		3					
I/O							
Relay:		Volt Free (Normally Closed / Common / Normally Open) 1x 30vdc 2A (Non-Latching)					
Environmental							
Ingress Protection:		Not Formally Evaluated					
Operating:		-10 ~ 50°C / 14 ~ 122°F 30 ~ 80% RH (non-condensing)					
Storage:		-25 ~ 50°C / -13~122F° up to 95% RH (non-condensing)					
Altitude Rating:		2000m					
Wiring							
Typical		#15AWG Power Pair; #18AWG Data Pair-Tinned copper.					
Approvals							
Electromagnetic Compatibility and Electrical Safety		BS/IEC/EN 61010-1 EMC EN 50270					
Other							
Communication		RS485 MODBUS RTU					
Gas Sensor	Indicating Range	Steps	Response (t90)	Recovery (t10)	Alarm: 1 (Pre alarm warning)	Alarm: 2 - Exposure Time	*EOL (Years)
Carbon Monoxide (CO)	0-999ppm	1	<60s	<60s	▲20ppm	Exposure time. ▲20ppm (after two hours) ▲50ppm (after one hour) ▲100ppm (after ten minutes) ▲300ppm (after one minute)	5



Area of coverage

Consider the coverage required and function of the area. Emphasis should be placed on airflow patterns and correct placement, not perceived detecting ranges. The target gas will only be identified when contact is made with the sensing element itself.

The AGSCOTFT monitor should be installed approximately 5ft 6" from ground level.

Find out more

American Gas Safety LLC

www.americangassafety.com

Head office:

6304 Benjamin Road, Suite 502, Tampa, FL 33634

Tel: (727) 608-4375

Email: info@americangassafety.com

