

AGSMerlin4INF3PSI

Datasheet

4" Flanged Gas Solenoid Valve
 2-Way, Internally Piloted, Normally Closed,
 0-3PSI / 120VAC



120VAC Power
Input



UL Listed



Normally
Closed Safety
Shutoff With
Assisted Lift



0-3PSI"
Pressure Rating

Other Pressures
Also Available

Standards



Product Overview

AGS gas solenoid valves control the flow of natural and LP (liquefied petroleum) gases and are most commonly used in with our range of utility controllers and gas detection systems. Designed for ON/OFF service.

Technical Specification

Pipe Size	*Max Operating Pressure Differential	**Max. Rated Pressure
4" Flanged	3 PSI	15PSI

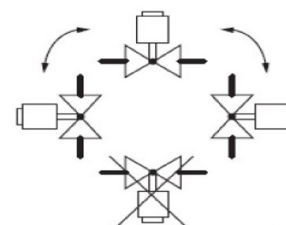
*Max Operating Pressure Differential (UL) allowable pressure drop from inlet to output for proper operation.
 **Max. Rated Pressure that the valve can be exposed to without leakage or damage to the valve.

Cf/h	Cu m/hr
10200	288.8

Voltage	Inrush	Wattage	Amperage	VA
120VAC / 60Hz	3.9	50.0	0.94	115

Nominal Opening Time	Closing Time
16 Seconds at 50Hz	One Second Maximum

Mounting Position



WARNING

If the flow is not in the same direction of arrow, valve may not shut off.

