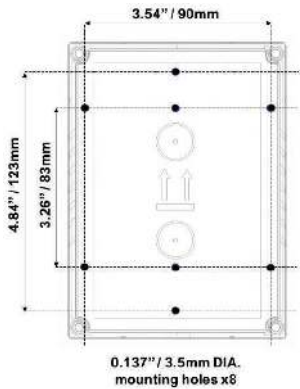


**PROTECT LIFE
 & PROPERTY**

**TIMED
 CONTROL FOR
 GAS FEATURES**



Manual Reset
 After alarm condition



Four Time Delay Options
 30 Minutes, 1 hour, 2 hours
 or 3 hours



Adaptable Utility Output
 For grill, gas features &
 heaters. 110VAC or 24VAC/DC



Power Supply
 110VAC or 24VAC/DC



Dry Contact Inputs
 For remote panic buttons
 and fire alarms



Easy To Use
 Clear LED status display



Modern & Compact Design
 Strong polyac PA-765,
 designed to withstand
 daily use



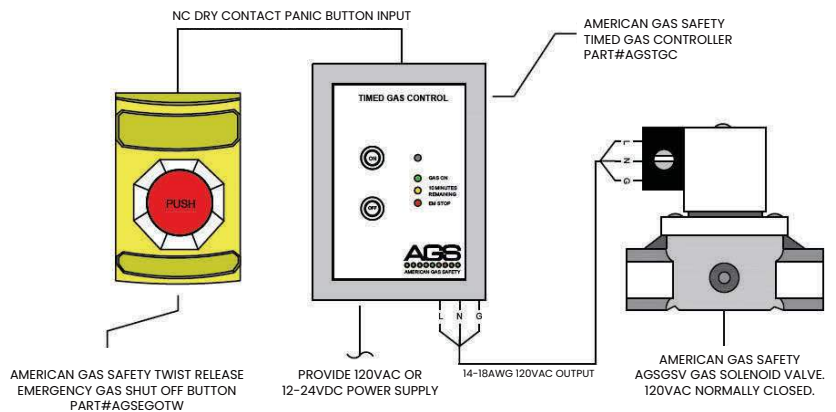
Automatic Control Of Gas
 ON/OFF operation with AGS
 gas solenoid valves

PRODUCT OVERVIEW

The AGSTGC provides a timed supply of gas to outdoor units such as grills, heaters and decorative fire features.

Upon pressing the "ON" button, the AGSTGC will begin a timed supply of gas for 30 minutes, 1 hour, 2 hours, or 3 hours. The time settings can be adjusted internally via dip switches. By simply pressing the "ON" button again during operation, the timer will reset to the selected timeout period. Once the timer has reached the end of the selected time out setting, the front LED will flash to warn the user of the timeout. When the AGSTGC is on, the controller will provide 120VAC or 24VAC/DC to a normally closed gas solenoid valve, energizing it open.

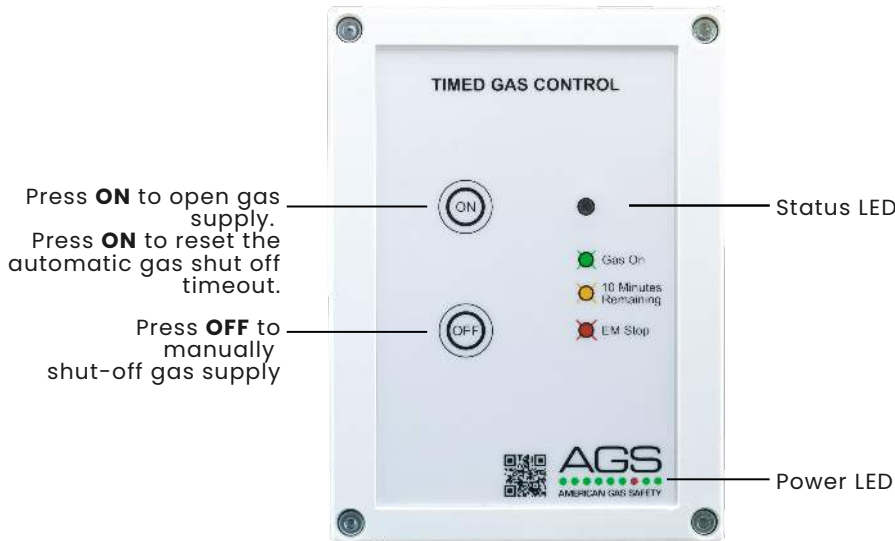
When the "OFF" button is pressed, the selected timeout has been reached, or a panic button is activated, the output will de-energize and close the connected gas solenoid valve. If a panic button is pressed, the unit will require a manual reset to re-start the gas supply. The AGSTGC is manufactured in a strong and modern polyac enclosure which provide protection from damage. The controller is designed to replace field constructed solutions for timed supply and panic shut down.



FIND OUT MORE

info@americangassafety.com
 (727)-608-4375

SIMPLE OPERATION



Press **ON** to open gas supply.
Press **ON** to reset the automatic gas shut off timeout.
Press **OFF** to manually shut-off gas supply

- Green.** Remains illuminated when gas is being supplied.
- Amber.** The controller LED will turn yellow ten (10) minutes before the automatic gas shut off timeout is reached and when five (5) minutes remain the buzzer will beep, and the yellow LED will then intermittently flash. After this time, the gas will automatically shut off until reactivated.
- Red.** Remains illuminated when a remote emergency stop device has been activated. The gas supply is isolated until the emergency has been investigated, rectified, and reset. Press ON to re-enable/open the gas supply.

WEATHERPROOF COVERS AVAILABLE



These indoor/outdoor low-profile covers protect devices without restricting legitimate operation. The versatile cover offers excellent protection against physical damage (both accidental and intentional), dust and grime as well as severe environmental conditions inside and out.

- Wall Mount Cover:** AGSTGCMCOVER
- Flush Mount Cover:** AGSTGCFMCOVER

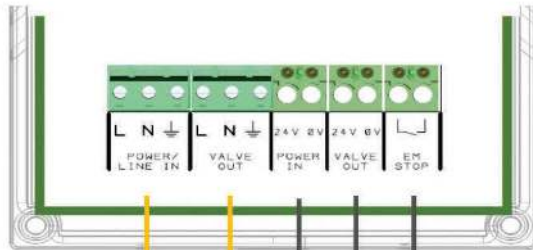
PROGRAMMABLE TIMER ADD ON FOR 24/7 CONTROL



AGSPGT7M
Add a 7 day programmable timer to achieve a scheduled timed supply of gas over your fire features

PLUG & PLAY INSTALLATION

Internal Fuse: Anti-Surge 3.15A 250V~
Wire Rating Min. 18AWG Tinner Copper @ 167°F



- Mains Power Input 100-120VAC~ 50-60Hz
- Gas Valve Output 3A @ 100-120V~
- 24V Gas Valve Output 3A @ 24VAC or DC ~
- 24V Power Input AC or DC
- Remote Panic Buttons Input Dry Contact - Open/Closed Contact

FIND OUT MORE

info@americangassafety.com
(727)-608-4375

PROVIDING SAFETY & CONTROLS IN

- SCIENCE LABORATORIES • BOILER ROOMS • GAS FEATURES
- COMMERCIAL KITCHENS • PARKING GARAGES • EMS STATIONS