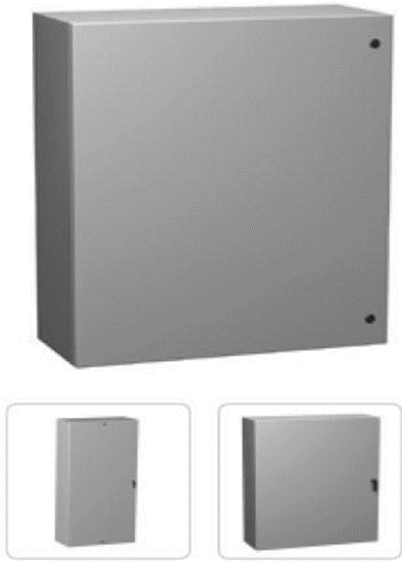


Wall-Mounted / Semi-Recessed Powder Coated Enclosure



Description

- > Impressive styling features like hidden hinges, attractive latching systems make the Eclipse a suitable addition to any high-tech equipment installation.
- > A wide range of sizes and practical accessories make this product line a complete package.

Design Features

- > Continuous seam welded 16 gauge steel or stainless steel construction
- > Hinged cover clamps to the base with keyed quarter turn latch for a watertight seal
- > External mounting brackets allow box to be mounted on a wall or panel without having to remove the cover and exposing internal components to the environment
- > Bonding studs for grounding are provided on base and door
- > Internal panel and hardware included
- > Easily machined and modified to your particular requirements
- > Rigid door design
- > Continuous gasket
- > Bar folded flange to enhance seal performance
- > Additional rubber washer inside mounting brackets to enhance water resistant seal
- > Added locks in larger size enclosures

Standards

- > UL Listed Type 1, 2, 4, 4X and 12.
- > IP65 and IP66 ratings
- > Meets UL50E requirements

Finish

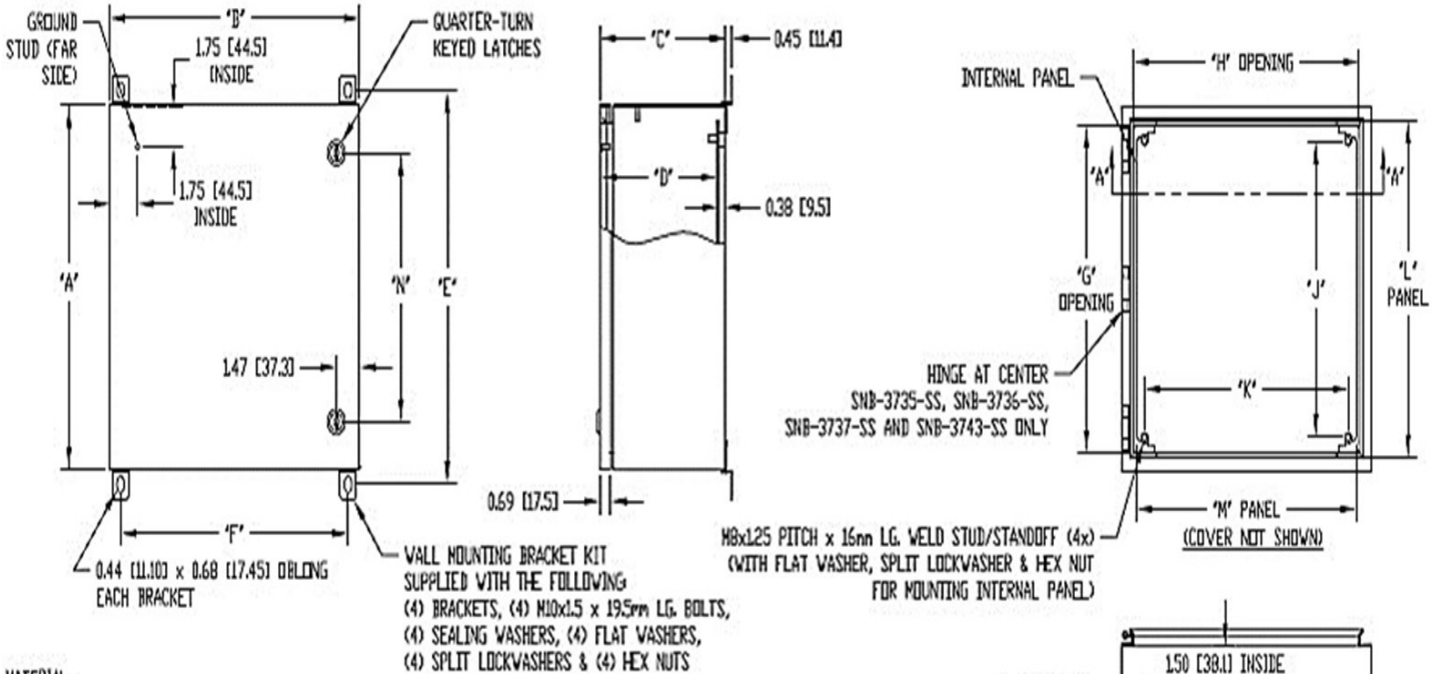
- > Smooth gray powder coat, Internal Panel - Clear Zinc plate

Gas Safety Systems

American Gas Safety, LLC. 4500 140th Ave N. Suite 101. Clearwater, FL 33672 T.(727) 608-4375 F.(727) 538-4237 www.americangassafety.com

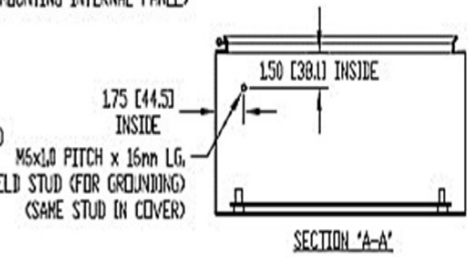
Utility Control

Wall-Mounted / Semi-Recessed Powder Coated Enclosure



MATERIAL:
 BODY & COVER - 16 GA. [1.5mm] TYPE 304 STAINLESS STEEL
 INTERNAL PANEL - 14 GA. [2.0mm] C.R.S.
 WALL MOUNTING BRACKETS - 14 GA. [2.0mm] TYPE 430 STAINLESS STEEL
 STRIKERS - C.R.S.
 HINGE PINS & WALL MTG. HARDWARE - TYPE 201 STAINLESS STEEL
 LATCHES - ZINC DIE CAST
 GASKET - 0.38 [9.5] THK. ROGERS CORP. PORON #4701-30-15375-04 (BLACK)
 SEALING WASHERS - BLACK NEOPRENE OR EQUIVALENT
 HOLE PLUGS - LIGHT GRAY NEOPRENE

FINISH:
 BODY & COVER - NATURAL, OUTSIDE SURFACES POLISHED
 INTERNAL PANEL - ZINC PLATED
 WALL MOUNTING BRACKETS & HINGE PINS - NATURAL
 STRIKERS - ZINC PLATED
 LATCHES - CHROME PLATED



BOXES SUPPLIED WITH GROUNDING KIT THAT CONTAINS THE FOLLOWING: (1) GROUND WIRE, (4) FLAT WASHERS, (2) SPLIT LOCKWASHERS AND (2) HEX NUTS

'A'	'B'	'C'	'D'	'E'	'F'	'G'	'H'	'J'	'K'	'L'	'M'	'N'
15.75 (400)	11.81 (300)	5.91 (150)	5.33 (135.4)	17.02 (432.3)	10.35 (263)	14.16 (359.6)	10.22 (259.6)	12.80 (325)	8.86 (225)	14.37 (265)	9.84 (250)	11.62 (295)