

Flush Mounting Enclosure



Specifications

- > 16 gauge steel
- > Seams continuously welded and ground smooth
- > Corner-formed doors
- > Simple easy-to-remove and install hinge pins with built-in captivation clip
- > High-torque threadless studs and fasteners on door
- > Minimum-width body flange provides maximum door opening (210 degrees)
- > Door opens 210 degrees
- > External formed body flange
- > Panel mounting studs fit optional panels and other accessories
- > Mounting holes in back of body for optional external wall-mount brackets
- > Removable door with hidden hinges for clean, aesthetic appearance
- > Seamless foam-in-place gasket
- > Quarter-turn slotted latch(es)
- > Grounding stud on body; bonding provision on door Hardware kit with panel mounting nuts, panel grounding hardware and sealing washers - Installation instructions provided
- > Flush-Mount models have a mounting frame that extends completely around the enclosure

Finish

- > RAL 7035 textured light gray polyester powder paint inside and out

Dimensions

- > Height – 20 inches
- > Width – 16 inches
- > Depth – 4 inches

Standards

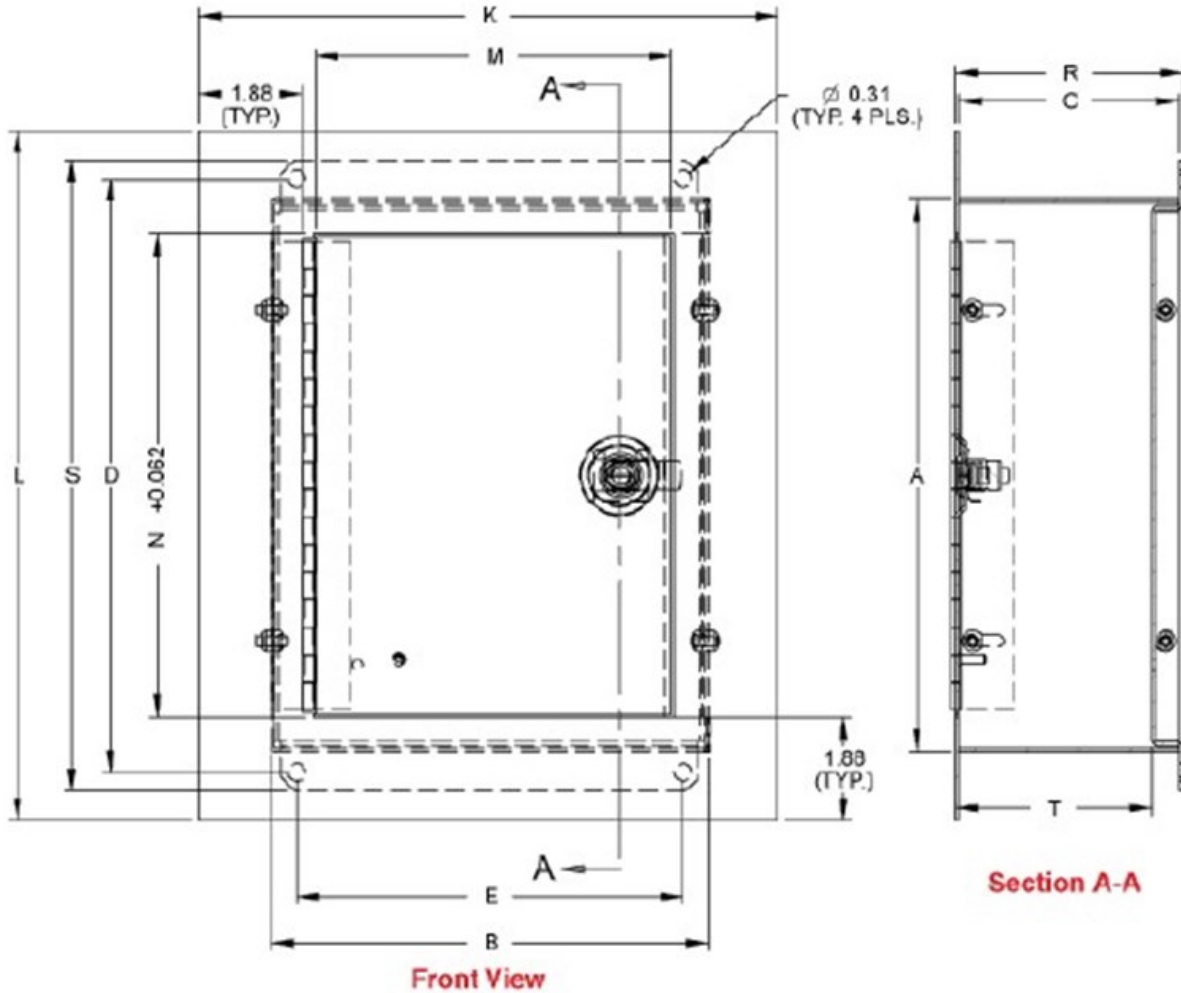
- > UL 508 Type 3R, 4, and 12
- > CSA Type 3R, 4, and 12
- > Complies with NEMA Type 3R, 4, and 12

Gas Safety Systems

American Gas Safety, LLC. 4500 140th Ave N. Suite 101. Clearwater, FL 33672 T.(727) 608-4375 F.(727) 538-4237 www.americangassafety.com

Utility Control

Flush Mounting Enclosure



Wrapper Size		Mounting Centers			Door		Overall Dimensions			Base	
A	B	C	D	E	M	N	K	R1	L	S	T1
20.00	16.00	4.00	20.75	15.00	14.46	18.68	18.50	4.13- 4.6	22.50	21.50	3.5- - 3.9