

# Flush Mounting Enclosure



## Specifications

- > 16 gauge steel
- > Seams continuously welded and ground smooth
- > Corner-formed doors
- > Simple easy-to-remove and install hinge pins with built-in captivation clip
- > High-torque threadless studs and fasteners on door
- > Minimum-width body flange provides maximum door opening (210 degrees)
- > Door opens 210 degrees
- > External formed body flange
- > Finish RAL 7035 textured light gray polyester powder paint inside and out
- > Panel mounting studs fit optional panels and other accessories
- > Mounting holes in back of body for optional external wall-mount brackets
- > Removable door with hidden hinges for clean, aesthetic appearance
- > Quarter-turn slotted latch(es)
- > Grounding stud on body; bonding provision on door
- > Hardware kit with panel mounting nuts, panel grounding hardware and sealing washers - Installation instructions provided
- > Flush-Mount models have a mounting frame that extends completely around the enclosure

## Dimensions

- > Height – 16 inches
- > Width – 12 inches
- > Depth – 6 inches

## Standards

- > UL 508 Type 3R, 4, and 12
- > CSA Type 3R, 4, and 12
- > Complies with NEMA Type 3R, 4, and 12

## Finish

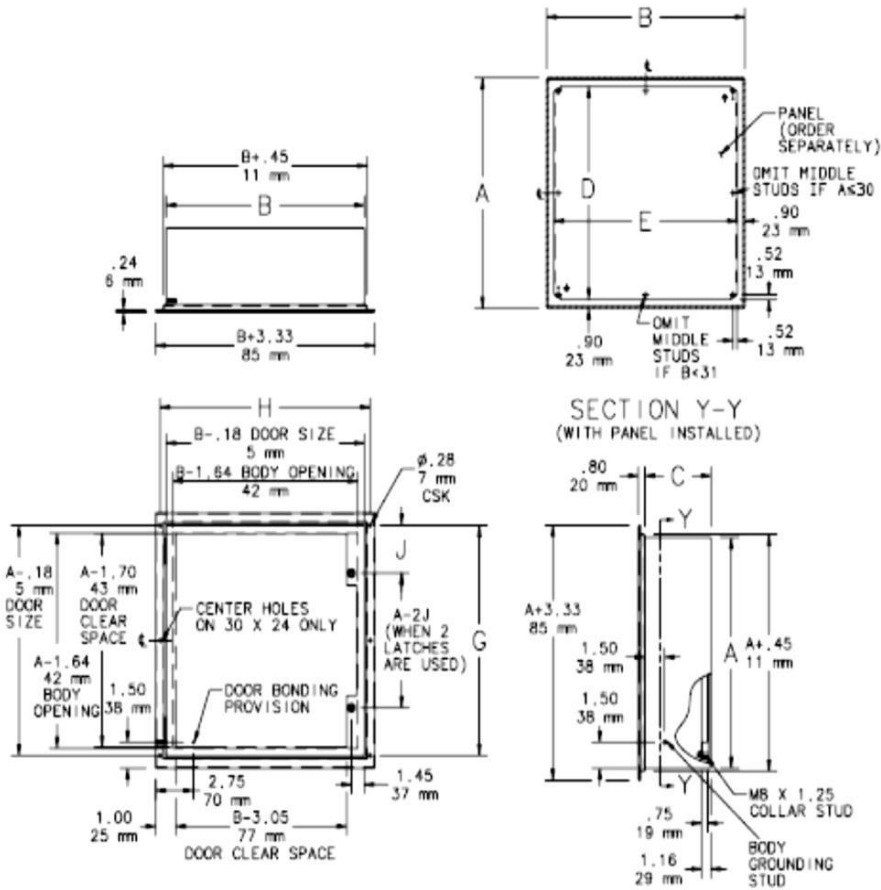
- > RAL 7035 textured light gray polyester powder paint inside and out

## Gas Safety Systems

American Gas Safety, LLC. 4500 140<sup>th</sup> Ave N. Suite 101. Clearwater, FL 33672 T.(727) 608-4375 F.(727) 538-4237 [www.americangassafety.com](http://www.americangassafety.com)

## Utility Control

# Flush Mounting Enclosure



| AxBxC in./mm                            | Finish            | Door Ga. | Body Ga. | CONCEPT Panel | CONCEPT Panel | D x E in./mm               | G x H in./mm               | Latches qty. | Latches style | J in./mm    |
|---|-------------------|----------|----------|---------------|---------------|----------------------------|----------------------------|--------------|---------------|-------------|
| 16.00 x 12.00 x 6.00<br>406 x 305 x 152 | RAL 7035 Lt. Gray | 16       | 16       | CP1612        | CP1612G       | 14.20 x 10.20<br>361 x 259 | 16.75 x 14.25<br>425 x 362 | 1            | Quarter-turn  | 8.00<br>203 |

UL 508A Listed; Type 4, 12; File No. E61997  
 cUL Listed per CSA C22.2 No. 94; Type 4, 12; File No. E61997

NEMA/EEMAC Type 4, 12, 13  
 CSA, File No. 42186: Type 4, 12  
 VDE IP66  
 IEC 60529, IP66

## Gas Safety Systems

American Gas Safety, LLC. 4500 140<sup>th</sup> Ave N. Suite 101. Clearwater, FL 33672 T.(727) 608-4375 F.(727) 538-4237 www.americangassafety.com

## Utility Control